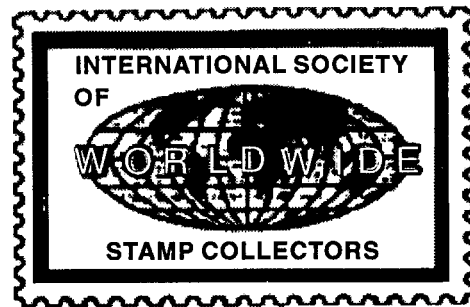


The Circuit

January-February 1999 • Volume 17 No. 1



Affiliate of: APS (#151) & ATA (#89)

The Official Journal of the International Society of Worldwide Stamp Collectors

Special for the New Year (possibly with tongue in cheek)

Out With the Old, In With the New— By William Cappa (#1514)

OLD

Musty, up 4 stories of cracked marble steps, or, in a rickety, brass-barred elevator. Meshed glass door lit by dusty sun's rays through old venetian blinds.

NEW

In convenient suburban shopping center on ground floor, with convenient parking, lit by modern neon. Walnut door. Alarm system.

STAMP SHOP

DISPLAYS

Crusty, disheveled albums, rotting on old, neglected shelves. A few curling \$5 Columbians barely visible through grimy counter glass.

Bright plastic dealer display books with Grenadines SS, Diana sheetlets, Elvis FDCs
+imperf Bugs Bunny sheets. Expensive albums.

PROPRIETOR

Old, white-haired gentleman with pince-nez bifocals. A bit absent-minded, with a disorganized business sense. Inclined to long lectures on postal history. An unusual love of children, and an unhealthy tendency toward generosity.

Young college business grad. Aggressive, no-nonsense, and computer savvy. No haggling, but offers lots of "bargain" packets (CTOs) and loads of NH British.

ATTENTION MEMBERS:

Please send all orders for ISWSC publications to our acting
VP for Publications:
John Rose
6901 Yorkshire Drive
Pittsburgh, PA 5208

Ed. Note: There are still several articles that were submitted to The Circuit many months ago, and have not yet been printed due to lack of space. You will see in this issue some excellent articles and letters that are not as CURRENT as they should be! They are included because they are valuable contributions from ISWSC members.
I beg your indulgence.
Soon this situation will no longer exist!

OFFICERS, MANAGERS & SERVICE CONTACTS

President: Anthony Zollo, MD (#856), PO Box 150407 Lufkin, TX 75915-0407 USA, zolloam@lcc.net

Immediate Past President (and Board Member): Tom Fortunato (#379)
42 Maynard St. Rochester NY USA 14615-2022
stampmtf@frontiernet.net

Interim Executive Director: Carol Cervenka (#498), 2502 Second St.,
Caddo Mills, TX 75136455 USA, 903•527-3957, ISWSC@webwide.net

Secretary/Treasurer: Dalene Thomas (#101), 8612 W. Warren Ln.,
Lakewood CO 80227-2352 USA, dalene1@uswest.net

VP/Youth Relations/Leader to Leader/Beginner's Publications/Youth Club Match-ups: Millie Feinberg (#361), 3340 Dale Road, Bensalem, PA 19020 USA ahfein@bellatlantic.net

ISWSC Board: Dave Creson (#170) PO Box H, Glendale, OR 97442 USA, creson@echoweb.net

ISWSC Board: Dave Nelson (#25—Past President) 200 Prospect St.,
Petaluma, CA 94952 USA, odnelson@fairisaac.com

ISWSC Board and Canadian Secretary: William Silvester (#1058) 378-C
Cotlow Road, Victoria, BC V9C 2G1 Canada

AUCTION

Receiving & Bidding: George Land (#241) 4024 Fairlands Drive,
Pleasanton, CA 94588 USA

Mailing & Billing: Everett King (#1389) PO Box 425, Sunol, CA 94586
USA, ekingstamp@aol.com

SALES CIRCUIT

Manager (US): Robert McKenzie (#1055), 420 Shorewood Dr., East
Falmouth, MA 02536 USA, SKOSHMEMCK@AOL.COM

Manager (Canada): William Silvester (#1058), 378-C Cotlow Road,
Victoria, BC V9C 2G1 Canada

OMNI CIRCUIT

Manager: Jerry Gross, PO Box 24966, Jacksonville, FL 32241 USA

SWAP CIRCUIT

Manager: Joan Roderick (#669), 12 Red Oak Road, Asheville, NC 28804
USA, jroderick@aol.com

REGIONAL SECRETARIES

These secretaries represent the ISWSC
and distribute stamps to youth programs in their region.

Australasia

Kevin Crowe (#459)
PO Box 7052
Sydenham Christchurch
New Zealand

Western Europe

Jean-Marc Fruit (#1124)
18 Cite des Coquelicots
B-8957 Messines
Belgium

Canada

William Silvester (#1058)
378-C Cotlow Road
Victoria BC V9C 2G1 Canada

British Isles

Chad Neighbor (#510)
28 Relugas Place
Edinburgh EH9 2PY
Scotland, UK,
cneighbor@scotsman.com

Eastern Europe

Jan Szpyrka (#539)
ul. Srebrna 29
PL-44121 Gliwice, Poland
szpyrka@zeus.polsl.gliwice.pl

Cuba

Adrian Portuondo (#952)
Apartado 9009
Santiago 90900, Cuba

Scandinavia/Baltics

Martti Vihanto (#830)
PO Box 34
FIN-20521 Turku, Finland

President's Column

By Anthony Zollo, MD (#856)

The ISWSC is back on track! Thanks to the hard work of the officers and managers, the business of the society is now up to date. We have processed the backlog of work and correspondence. We are now ready to not only keep up with renewals, new members and other business as it comes in, but to move the ISWSC forward and make some progress! I want to stress that even though the business functions of the society have suffered with the worsening health of Carol Cervenka, the benefits of membership (especially the Omni Exchange, Sales Program, Swap Circuit and Auctions have continued to operate at their usual level of efficiency. We are all indebted to the managers and co-managers of those programs for their hard work and efforts on our behalf.

During the past months, with services being slow and uncertain, we have kept all memberships active, even as they expired. We cannot afford to continue to do this. I am asking each of you to check your membership expiration date (found on your membership card and on the address label by which this issue of *The Circuit* was mailed) and send a renewal check immediately if your membership has either already expired or will expire in the next 3 months. By the time this issue reaches you we will begin to terminate memberships that have expired.

Recently, a letter appeared in *Linn's Stamp News* from a collector who stated that one can only enjoy stamp collecting today by narrowly focusing collecting interests. Well, as ISWSC President, I just had to reply. My reply was published in a November issue and has resulted in many requests for applications from worldwide stamp collectors who were not even aware of the existence of the ISWSC. This tells me that there are many others out there who would probably like to join, and that we are not doing a good enough job at advertising our existence to them. This is one of my goals for the future.

We also need to rebuild our Youth program and publication program. The death of Al Feinberg, has left a void which must be filled. One of the ISWSC's proudest contributions to philately has been our efforts to encourage and support the hobby to young people. I am calling on all members to consider volunteering to play a role in supporting these two

Continued on page twelve:

NEWSLETTER EDITOR/PUBLISHER

Marian MacLeod, 302 Armory Place, Sault Sainte Marie, MI 49783-2006.
906•632-9663; Fax 906•632-9663; mmacleod@sault.com

Phone or send your questions to the appropriate volunteer. Please include a self addressed stamped envelope or an IRC for a reply.

DEADLINE NEXT ISSUE: FEB. 15, 1998

QUIZ: France

By Robert C. Toole (#696)


France has issued stamps since 1849. Stamps were issued for five occupations of France. And two international organizations have issued official stamps in France.

- | | |
|-------------------------------|-------------|
| A. Allied Military Government | E. France |
| B. Alsace | F. Lorraine |
| C. Alsace-Lorraine (2) | G. UNESCO |
| D. Council of Europe | |

1. ___ Stamps since 1849. The nation is in western Europe.
2. ___ Stamps in 1870. During the Franco-Prussian War Germany issued occupation stamps for the region in northeast France.
3. ___ 1916. During World War I Germany again issued occupation stamps for the region in northeast France.
4. ___ 1940. During World War II Germany issued occupation stamps for a French province between the Rhine River and the Vosges Mountains.
5. ___ 1940. At the same time Germany issued occupation stamps for the French province west of number 4.
6. ___ 1944-45. Late in the war the United States and Great Britain jointly issued occupation stamps for civilian use.
7. ___ Since 1958. The international organization has issued stamps for official use only on mail posted in the post office in its building in Strasbourg.
8. ___ Since 1961. The international organization has issued official stamps for use only on mail posted in the post office in its building in Paris.



Note: — Bob says that if members find his quizzes too difficult, they should look up the countries. We have several more quizzes in our files to share with you; stay tuned!

			C	8
	F	1 - O	D	7
	E	2	A	6
	D	3	F	5
	C	4	B	4
	B	5 - 6	C	3
	A	7 - 8	C	2
	Grade	Correct	E	1
QUIZ ANSWERS				

Placing an Ad? Read information!

Editor's Notes:

If you have sent an article to The Circuit and have not yet seen it in print, the reason may be that there were two missed issues between editors, and there is a small backlog of articles yet to be printed. Please be patient and I will try to get them all in. I usually send The Circuit to the printer one month before it comes out, as I have been requested to do

If you are sending an article to The Circuit, the very best method is to send it by email to me as regular text (preferred over attachment) at mmacleod@sault.com and, if there are pictures/graphics to be included, scan them and attach them to your email article. If that method is not available, please send article in printed form and/or on disk with legible name and member number.

Thank you!



Dues Information:

Single/Dealer/Club membership, \$10*

Youth membership (under 18), \$8*

Family membership (up to 4 persons in one residence), \$17*

***=plus 250 large commemoratives for the Youth Program or equiv. donation in US \$**

Dues above are for one year and include six newsletters per year. You may sign up for three years at a time. For an application or further information send SASE or IRC to: ISWSC, 42 Maynard St., Rochester, NY 14615-2022 USA.

Advertising Policy: All ads dealing with philatelic concerns are acceptable. We reserve the right to edit out objectionable language. Advertisers are expected to respond to all inquiries, so be sure you can handle the responses before you offer to trade, buy or sell. If you have a bad result from answering an ad, contact the editor. We will try to resolve the conflict.

Display Rates (Camera Ready)* per insertion:

Full page, \$40**; Half page, \$20**;

Quarter page, \$10**; Per column inch, \$2.

*Camera Ready means ready to paste up or scan and print. Reductions and typesetting extra. **Discounts for three or more insertions of same ad. Yearly display rates available. Write to ISWSC past president Tom Fortunata (see p.2) for special rates.

Classified Rates per insertion: First 30 words, including name, address, and zip code are \$3. Additional words are 20 for \$1. NOTE: State abbreviations are one word. "PO Box 12345" is two words. Zip code is one word.

Make all checks payable to ISWSC in US funds.

Send copy to the Editor and payment to Tom Fortunata. Addresses are on page 2.

How Many Countries Are There?

by John Rose (#1011)

In 1996, the Pittsburgh Folk Festival asked me to design an album for Worldwide Stamp Collecting.

When I finished, it listed 216 countries, but some of them actually weren't. What is a country, anyhow? For the children I said that a country is the same thing as a nation, and my definition was "it issues stamps." Of course there are exceptions; I think that more than 240 issue stamps at present.

This spring I took a course on Nationalism at the University of Pittsburgh's College for Over Sixty. In the course we considered such esoteric questions as "when does a country become a nation?" and "is the new phenomenon of nationalism about to be replaced by globalism?" and decided to find the answer to a simpler question: "How many nation-states are there?" Our text stated that there are 8,000 identifiable different groups in the world that could be nations!

Forget "it issues stamps." Now my definition of country/nation is that it is a member of either the UPU or the UN. I still use the terms country and nation interchangeably, because we hear about "countries" on the news, but call the collection of them "the United Nations."

Linn's Stamp News printed a list of the 188 countries in the Universal Postal Union. And the United Nations sent me a list of its 185 members, also available on the Worldwide Web at www.un.org/news. It seemed easy enough—just compare the two lists. Once I found the true number of countries I would revise my album so that it could be used to teach children the countries of the world—hard enough today, without adding all the non-countries that issue stamps.

Alphabetically, the first discrepancy on the list was Andorra.

As a boy I collected stamps from this valley country between France and Spain, and noticed in the newspaper when it became the 184th member of the UN (Palau is 185th). But Andorra (1993) does not belong to the UPU; neither do Palau (1994), Micronesia (1991) or the Marshall Islands (1991). Dates are the years admitted to the UN.

I also found four members of the UPU that are not members of the UN, namely Nauru (1969), Netherlands Antilles (1954), Tonga (1972) and Tuvalu (1981). Shown are dates of current UPU membership.

Two others were in the UPU but not the UN. We know from two wars that Switzerland doesn't join things it doesn't have to. Although it's not in the UN it is in the UPU, maybe because the UPU was formed in Switzerland in 1874. Neither did the Vatican join the UN. But they are both in my album and get their mail delivered.

Comparing the two lists was interesting and had the added advantage of getting correct spelling and country names. But there were mysteries. Samoa joined the UN in 1976. Western Samoa joined the UPU in 1996. Only the latter is in my album.

The UPU listed Great Britain. I had been telling the children that since it doesn't issue stamps, "Great Britain" is not a country. I was glad to see that the UN listed it as "the United Kingdom. It has been difficult to determine the correct name of that country, and to make it harder it's the only nation that doesn't put its name on its stamps. I suppose that is because it issued the first stamp.

The back of my album has a stamp identifier and it includes how to distinguish the stamps of North and South Korea and the stamps of

China and Taiwan. But neither the UN nor the UPU includes Taiwan. And although the UPU includes both North (1974) and South Korea (1949), the UN lists only "the Republic of Korea" (1991). My album has both of both.

Finally, my album has two entries that the two lists do not, for special reasons. I had thousands of Canal Zone stamps that my aunt saved when she worked for the International Correspondence School. And I want the children to be aware of the canal turnover in 1999. So the Canal Zone is in the album.

And last, but not least, the UN is in the album. It's not a nation, but I think a most important organization of nations. And its membership list helped me to determine the answer to the question.

There are 192 nations in the world (UN or UPU members), 193 if you add Taiwan. The Canal Zone and UN bring the total listed in my album to 195. And as I write this things are happening around the world that might make that change!

In late April 150 children from six different schools used my album at the Intergenerational Arts Festival; 5,000 stamps were given to collectors. At the end of May 460 collectors used the album at the Pittsburgh Folk Festival; 17,000 stamps were given out.

The album calls for one stamp from each country and has them clearly marked on maps. Now that it includes only countries, I have changed the name of my album from *Worldwide Stamp Collecting* to *Postage Stamps from the Countries of the World*.

If you want a copy of the pages so you can make your own albums, please send at least 100 stamps from South America, Africa or Asia. Having given out 22,000 stamps at two festivals, I need to replenish them before April 1999.



Introduction to Indian Philately

by Joseph Kairmady—#1761

In India, during the administration of Warren Hastings (1774-1785), the postal system maintained by the East India Company was made available for transmission of private communications. Before the introduction of postage stamps, prepayment of postage was indicated by hand struck stamps known as *Bishopmark*, named after Henry Bishop, Postmaster General of Great Britain. In India, it was in all probability first introduced in Calcutta Post Office in January 1774, when Warren Hastings allowed carriage of mail of private individuals on payment of fee through the East India Company's postal network. Small copper tickets or tokens valued at Annas 2 ($\frac{1}{4}$ th of a Rupee) were generally the medium for payment of postage. Single letters up to 2 $\frac{1}{2}$ tolas (29 gms) weight were charged at the rate of Annas 2 for every 100 miles (160 kms). These copper tickets were reported to have been withdrawn by the Government on 14 September, 1784.

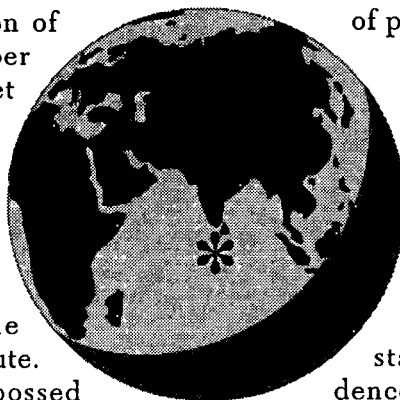
Sir Rowland Hill (1795-1879) introduced the Penny Postage stamps in England on 6 May, 1840. First postage stamps issued in India were in 1852 in the Province of Sind under the Bombay Presidency. Sir Bartle Frere, then Chief Commissioner of Sind, was asked by the Bombay Government to undertake the upkeep of the postal services of the province and also to popularize it among the public. He was a great admirer of Sir Rowland Hill and his Penny Postage Scheme. With the help of Edward Lees Coffrey, then Postmaster of Karachi, Sir Bartle issued the first postage stamps on 1 July 1852. They were embossed pieces of paper with a circular design in red, white, or blue. 'Scinde Dawks,' as they were known, were

of the denomination of $\frac{1}{2}$ Anna. The number of stamps per sheet was probably 64, 8 rows of 8 stamps. The exact number is not known. They were used in the Province of Sind, as well as on the Karachi-Bombay route. Though these embossed stamps were recalled in September 1854, but the order was not apparently carried out till June 1866.

After 13 years of the use of postage stamps in England, the Government decided to extend their use in India. In 1853, the first design was prepared in the Mint at Calcutta and the stamps were struck under the guidance and supervision of Captain (later on General) Sir Henry Thuillier, then Deputy Surveyor General of India at Calcutta. The stamps were issued in July 1854. The printing of stamps in the Calcutta Mint ceased in November 1852.

Thereafter they were printed at London by Thomas De La Rue & Company. The India Security Press was set up at Nasik in Maharashtra State in 1925 and the postage stamps have been printed at Nasik since. Today they are printed by photogravure process.

The stamps of the British period generally carry the effigy of the regnant King or Queen. India was the first country in the Commonwealth to issue airmail stamps. In 1929, a set of six airmail stamps was issued showing a De Havilland aircraft along with the King's portrait. The inauguration of the new capital city of New Delhi, Silver Jubilee of the reign of King George V, victory in the Second World War were commemorated with the issue



of pictorial stamps.

India attained independence on 15 August, 1947. Thereafter Indian P&T Department embarked on a broad based policy relating to the issue of stamps. The first stamp after Independence, was issued on 15

December, 1947 in the denomination of 1 $\frac{1}{2}$ Annas, gray-green in colour depicting the lion capital of Ashoka Pillar and carrying the inscription "Jai Hind" in Hindi. Since then, India has been issuing definitive as well as commemorative stamps. Five definitive series on themes relevant to the country's heritage and progress in various fields have been brought out. The Sixth Definitive Series on the theme of "Agriculture & Rural Development" commences from 1979.

Mahatma Gandhi and Jawaharlal Nehru occupy place of pride on Indian stamps. The first set of 4 stamps paying homage to the Mahatma was issued on 15 August, 1948 and were printed by the Swiss firm, Heliss Courvoisier S.A. The commemorative stamps have been issued in honour of the Presidents of India, Prime Ministers, eminent Indians from the annals of India's struggle for freedom as well as from the fields of literature, art, culture, education, etc. Many foreigners of international eminence have also been honoured on Indian stamps.

Special stamps highlighting India's cultural heritage, fauna and flora and various other aspects of national life have been issued from time to time.

India postage stamps, during more than a century-old history, have carved a secure niche for themselves in the world of philately.



The Bank of America

by Adolf J. Koolhaas (#758)

Note: the following letter was written one year ago and is finally being printed! It is as timely and interesting as it was when it was sent to ISWSC:

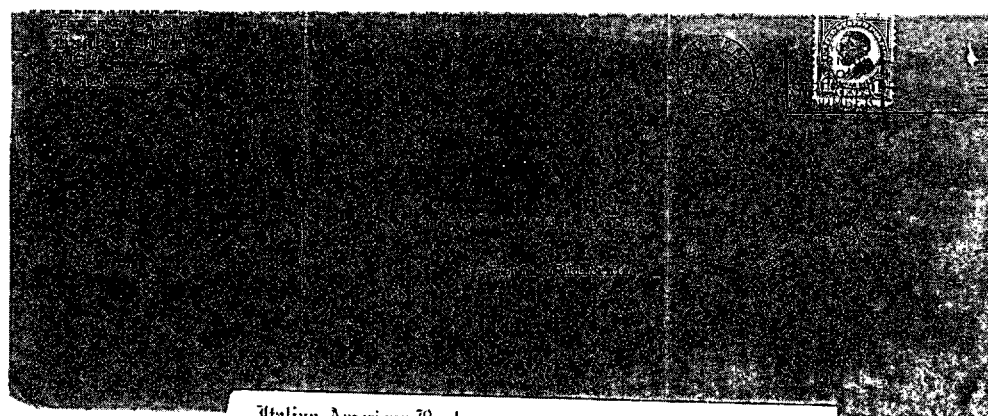
Dear Friends, WWS Collectors:

In a response to a question about the Bank of Italy you wrote that this became the Bank of America. Recently I found two envelopes for sale in our local coin and stamp store which I believe give us some more history about the Bank of America.

They were addressed to the same customer 21 years apart. The older one was from the Italian-American Bank, mailed Mar. 8, 1909 (two years before I was born). The second one was from the Bank of Italy, mailed May 18, 1930. (The 8 is not very clear.)

The two statements, however, are from April 1930. The letter in the first is interesting, too. (What is "outside property"?) Best regards, Adolf J. Koolhaas (#758), Redlands, CA

Editor's Note: The following is a scan of the photocopies sent by Mr. Koolhaas, and are the best we could do with them. I would love to have had the originals to scan!



Italian-American Bank,
San Francisco



Guscetti Bros

Loyalton

Calif

*Wm. H. Heston, President
M. J. Guscetti, Vice President*

*J. L. Hartman, Cashier
W. L. Hartman, Asst. Cashier*

Italian-American Bank

*Circle Address:
222 MARKET San Francisco*

PAID UP CAPITAL, \$ 750,000.00

San Francisco, California

March 8, 1909

Guscetti Bros,
Loyalton, Calif.

Dear Sirs:

In reply to your application for a loan of \$2000.-
we are sorry to state that our bank does not loan on outside property.

Very truly yours,
Italian American Bank

[Signature]
Cashier

NOTICE TO SALES CIRCUIT PARTICIPANTS

Due to changes in our insurance policy and new postal rates effective 1/10/99, the following change will be made to the old "Insured" class circuits (effective 1/1/99).

1. All sales books with a sales value over \$150 will travel by CERTIFIED mail instead of INSURED. (As of 1/10/99 the cost of certified mail will be \$1.40 over the regular first class postage. The cost of insured for \$100 will rise to \$1.80 over the regular first class postage, so this will result in a saving of

\$1.40 for each mailing.)

2. These circuits will carry a "C" prefix vice the old "I", i.e. "C99-01, C99-02," etc.

3. The procedure for certified mail is exactly the same as insured, except a green slip is used instead of blue.

4. No return receipt (which costs extra) is required. No changes are anticipated for the "Uninsured" class.

NOTICE TO ALL ISWSC MEMBERS

Our inventory grows and now contains much new material of almost all kinds. We would welcome new buyers in both the UNINSURED and CERTIFIED class. Many members participate in both.

We should point out that while the value of the CERTIFIED class circuits are higher, not ALL the material is expensive; often only a few items are

"heavies" and the balance of the sales books are modestly priced.

Why not give it a try? Drop a note to
Robert A. McKenzie, Sales Manager, ISWSC;
420 Shorewood Dr.,
E. Falmouth, MA 02536

or email to: SKOSHEMCK@AOL.COM
We'll be pleased to send you the information.

Secrets of Selling Stamps on the E Bay Auction

by William Cappa (#1514)

(for those of you who want to venture forth into the murky and strange waters of computer business)

1. **SELL ONLY THE FINEST STAMPS.** This means ONLY: Macao, Singapore, U.S. Match and Medicine, great rarities, First flight covers signed by Benj. Franklin, etc.
2. **MAKE YOUR PRICES REASONABLE.** Sometimes this may mean you'll have to break even or take a loss, BUT the main thing is to sell stamps, right? And think of the prestige!
3. **DESCRIBE THE STAMP(S) METICULOUSLY.** Begin with precise dimensions, down to the split mm!, carefully measure and denote exact centering, shade and color hues, and whether ground-work is sharp...how many engraving lines (or litho), what type of paper (if used), all details abt. cancels, dates, etc. A lot of work, but it just could pay off!
4. **KEEP IN TOUCH WITH BIDDERS.** Answer EVERY question they pose. Even offer to give
- them your credit card and bank acct. #s if that will help get you a sale. If Kenneth Starr wants to know something, for Heaven's sake... tell him!
5. **USE COLOR SCANNING AS AN AID.** If you're offering a single, blow it up to 10X its original size (so your prospective purchaser can see every minute paper fiber and flaw, every tiny stain, cut, tear, ripple, wrinkle and crease!) If you're offering a collection, scan every page! Remember, you can't show enough to please your audience. (Perhaps you'd care to include a Playboy centerfold as an incentive to bid!)
6. **EVERY MORNING, CONTACT ALL BIDDERS.** Let them know how you're feeling, ask them how they're "getting along." Invite them to coffee (if they're nearby). Offer to help them with any personal problems; even offer to reduce prices (if that is what it takes).



The First Trade

by Linda Smit #1436

Editor's Note: Linda Smit submitted three articles to The Circuit in response to a request for articles by former editor Rita Kallal. Smit lives in Suriname.

Previously I explained how I entered into the world of stamp collecting. Carol Cervenka had basically explained to me how to make my own album, using three-ring binders, and had even sent me a page with a nice frame on it that I could copy. I used that for the first page for each country, and away I went.

I did use my fingers, by the way!

When I read the application for ISWSC, I saw the part that says "I also collect _____." Thinking I should write down what other things I collect (I hadn't yet learned about topicals), I wrote down "books and tropical fish". Thus I began two topical collections quite by accident.

Once I joined the club, I started to receive letters. The first letter was full with several hundred stamps! I was delighted and dismayed at the same time. What was I supposed to do? I didn't have nearly that many trades. Would all the traders do that? I was in big trouble! The stamps he sent were so pretty, lots from Africa with animals and minerals and unusual things on them. I painstakingly went through the entire heap, selecting only the most wonderful ones, and sent the rest back with my trades; asking the generous soul never to again send so many stamps at once. He wrote back that they had all been a gift, and he was surprised I didn't want them! Oh dear.

Lots of people wrote to me. Suriname stamps are hard to come by, it seems, and so I became a very popular person. My supply of Suriname doubles was getting low, so I blithely trotted off to the Suriname post office to obtain more. There I learned another lesson.

The post office had no stamps. No stamps even to put on my letters back to the people who wrote to me. All mail was metered. Who ever heard of that? Providentially, I later found out that the philately department had stamps, and went there with high hopes. There I found some good news and some bad news. The good news was that they had stamps. The bad news was that you had to buy them in complete sets, and the values were hyperinflated—much more than anyone would ever use for postage. Of course, they were produced for collectors like me—or rather, richer than me.

Nevertheless, this served me well for several years, as I bought up the older, least expensive sets. And in return, "my" trading partners provided me with many

colorful and exciting stamps, lots of them, as well as friendly letters which I enjoyed just as much.

Another strange phenomenon occurred: as I collected stamps I seemed to mysteriously collect other stuff as well. But more on that later.



¿Whatzits?

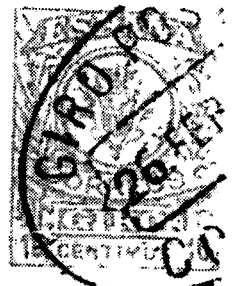
Received from "a Canadian Member"

These stamps were received by the former editor for the ¿Whatzits? column. The note on the page simply states: "Rec'd from a Canadian member."

Accompanying most of the stamps are guesses about them from the person who sent them:



Finland?



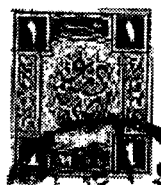
Spain?



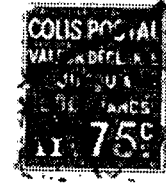
?



Spain?



Egypt?



Belgium?
Postage Due



NEW MEMBERS

1890- Mike Ewing

Email: ewingm@flash.net

2100 F- Alvin, Nancy & Lloyd Lambert
1314 Fulton Ave.

San Antonio, TX 78201-5112

2101- Jeff Schumer

1010 Fallscroft Way

Lutherville, MD 21093-1706

B (1950), Top (Music, US covers), Yrs (45), Int, DD, 1 (Pre-1900 US music advertising covers), 7 (Iran)

2102- William H. Knoth, Jr.

non-published address

2103- Lois Miller Ellsworth

136 Conway St Apt #9

Greenfield, MA 01301-2330

A, Yrs(1), Beg, DD, 10(ww)

2104- David J. Klus

3529 Dougan Dr

Cobble Hill, BC V0R 1L0, Canada

B(1850-1950), G, Yrs(25), Int, DD, 1-3-6 (Can), 7(Can, US, Br Emp), L(Fr)

2105- Michael E. Queale

4031 Hopesmore Dr

Victoria V8N 5S8, Canada

G, Yrs(40), Int, DD, 4(Fra), 7(Can, GB, Fra), L (Fr)

2106- Valentin D. Iotov

PO Box 1123

BG-5800 Pleven

Bulgaria

2107- Mark Dyck

2904 Wascana St

Regina, SK S4S 2G8, Canada

B(to 1966), D, Yrs(3), Int, CC, 7(Br Emp GVI, Can, WEur, Aus, Scand)

2108- Bonnie McNutt

5606 39th Avenue West

Seattle, WA 98199-1301

C, G, EE, 10(Irish covers, Jamaican postal stationary)

2109- Michael A. Weatherford

1715 Clemson Dr

Colorado Springs, CO 80909-2363

Email: mweather@rmii.com

A, F, Yrs(40), Adv, 3(unique cancels), 4, 5(official perfins), 7 (see web page)

2110 Y- Lauren Barkell

720 21st Place NW

Salem, OR 97304-3617

A, G, Top(animals, Disney), Yrs (3), Beg, AA, 1-7(US)

2111- Maj. Eory E. Toops III

PSC 451, Box 295 (ASU-SWA)

FPO AE 09834-0295

B (to 1969), F, Yrs (39), Adv, DD, 7(Iran, Viet, Ita Soc Rep, PRC,

S Af homelands), L (Fr-translate)

2112- Barry D. Bonner

3306 Carnaby Creek Dr

San Antonio, TX 78247-4432

B (to 1940), G, Yrs(30), Int, DD, 5, 10 (GB Vic)

2113- Julie A. Noble

unpublished address

2114- Herbert Musika

PO Box 983

Masaka, UGANDA

A, H, Beg, CC, 1 (ww), 6 (Uganda), 8, 9

2115- Pamela K. Harbin

PO Box 4923

Biloxi, MS 39535-4923

Email: sycokate@aol.com

A, D, Yrs(3), Beg, DD, 7(ww used, US mint)

2116- Lora D. Ludwikowski

9503D Gilman Loop

Fort Drum, NY 13603-3325

Email: loradcl@imcnet.net

A, Top(Br Royalty, castles, Disney), Yrs(21), Int, CC, 7(UK)

2117- Barry D. Goldblatt

131 Buckingham Rd

Upper Montclair, NJ 07043-2322

Email: bgoldbla@ix.netcom.com

B(to 1950), D, Yrs(30), Adv, CC, 4 (US), 6 (ww)

2118 Y- Timothy T. Kwai

15 Candlewood Pl

Walnut Creek, CA 94595-2601

Email: kerman@apmgroup.com.hk

A,Yrs(7),Int, 1-2-4-6-8-9(ww),2-3-5-7(US)

2119- Albert H. Ewell

unpublished address

ADDRESS CHANGES

56- Donovan 1315 W College Ave Ste 300 State College PA 16801-2776	913- Ware 3568 Westleigh St Eugene OR 97405-1136	1377- Smith 5659 Gainswood Ct Pensacola FL 32526-3453
97- Burmeister 5855 Noble St Gratiot WI 53541	934- Moreau 211 Willow Valley Sq #D-319 Lancaster PA 17602-4861	1391- Smith 1978 Cherrylawn Dr Toledo OH 43614-3507
163- Tannenbaum 3033 Sherbrooke St NW Ste 503 Westmount QC H3Z 1A3, Canada	974- Stearman 217-40 Ironwood Point St Albert, Alberta T8N 6C7 Canada	1482- Glenn 2732 Hollybrook Lane Morganton, NC 28655-6805
170- Creson PO Box 624 Glendale, OR, 97442	990- Kubler Ohlberg 4 D-59469 Ense-Luttringen Germany	1529- Stahl 523 James St Spring Lake MI 49456-1938
356- Sackett 8180 Philatelic Dr Spring Hill FL 34606-2955	1023- Combs 8100 Westwold Dr Unit 108 Bakersfield CA 93311-3422	1553- Powell 1842 Abbeyridge Dr Merritt Island FL 32953-4381
393- Bennett 172 Phelps Rd Madison Heights, VA 24572-2401	1073- Josse 974 Elsinore Ct Palo Alto CA 94303-3410	1598- Cook 37 Crystal Park Cres Ottawa, ON K2C 3Z8 Canada
421- Palko PO Box 411 Whitehall, MI 49461-0411	1271- Miles 2512 Farnell Rd Fort Collins CO 80524-1523	1648- Kemp 2301 Wake Forest Dr Columbia SC 29206-1441
546- Beutler 4512 Agate Hills Rd NW Albuquerque NM 87114-5378	1317- Kolcz 25 W 657 Prarie Wheaton IL 60187-3824	1723- Opp 206 Rainier Dr Lodi CA 95242-2623
850- Rosenfeld 2008 Waterford Rd Yardley, PA 19067-5430		1743- Kee 3826 W Elgin St Chandler AZ 85226-4905

1749- Morse

1875 Cobia Dr Apt #F-101

Vero Beach FL 32960-5297

MEMBERSHIP SUFFIXES

D- Dealer

F- Family

Y- Youth

C- Club

YC- Youth Club

1797- Steiner

912 Crescent Dr Apt 1-1

Champaign IL 61821-4268

Please note that there are some new interest codes. They were changed to make them more understandable without a key. A full key to the codes will be published in the roster issue, due out in the March-April issue. Commonly accepted three-character country codes will be used rather than spelling out the entire name whenever possible.

1807- Enz

1334 Vulcan St

El Cajon CA 92021-1050

COLLECTING LEVEL

I (beginner) is coded: Beg

II (intermediate) is coded: Int

III (advanced) is coded: Adv

1810- Tyska

508 S Broadway St

Joshua TX 76058-3129

YEARS COLLECTING CODE

X IS NOW CODE: YRS

1874- Kennedy

PO Box 1980

Rogue River OR 97537-1980

TOPICAL INTERESTS

code: H is now code: Top

RESIGNATIONS

70- Ginsberg (had several strokes)

157- Hyde (no longer collecting)

358- Smith (health problems)

827- Pankratz (no longer collecting)

908- Walker (deceased)

956- Madgett (no reason given)

1477- Russel (no longer collecting)

1561- Mattill (irregular mail service)

1554- Baker (poor health)

1711- Fillinger (no reason given)

1731- Tysko (no longer collecting)

Former codes 60 and 80, relating to writing before exchanging philatelic material, have been dropped. Unless otherwise specified, each member is potentially interested in exchanges. It is always a common courtesy to write before actually sending material.

LANGUAGES WRITTEN

code: 83 is now code: L

READ CAREFULLY- The following members have email addresses which are no longer valid. If new email addresses are known, please email stampmf@frontiernet.net

19, 288, 345, 402, 428, 476, 484, 753, 1090, 1179, 1248, 1421, 1644, 1652, 1712, 1746, 1748, 1757, 1780, 1815, 1822, 1843, 1850, 1851, 1875

RETURNED MAIL

387- Shew (no new address)

1021- Topper (no new address)

1695- Thrash (no forwarding address)

ALWAYS USE ZIP+4



CLASSIFIED ADS

—Send your ads to the editor, but please do not send money for ads to the editor.

See page 3 for information about where to send money.—

LOTS FOR SALE: AUSTRALIAN (\$50 Scott's CV), New Zealand (\$50 Scott's), Great Britain (\$50 Scott's, all commemoratives), Papua New-Guinea (\$40 Scott's). Any lot, Australian \$10 cash (no checks). L.T. Cook (#925), 37 Church Street, Boonah, Qld, Australia 431

WANTED: foreign stamp mixtures, collections, accumulations—off or on paper. Write to: Lionel Weisman, 1411 S.W. Ash St., Lake Oswego, OR 97034 or call 503-636-7099.

LARGE SHOEBOX ACCUMULATION. No US. Off paper glassines, trade sheets few covers. \$35 ppd. Mint US accepted to \$20. Joseph T. Makarewicz, 2864 Ridge Rd., Ext. Baden, PA 15005. (exp. Jan/Feb 99)

BEGINNING COLLECTOR of postally used worldwide 1840-1940 would like to receive dealers' lists & hear from dealers who accept "want lists." I'm especially interested in the lesser-known countries. I'm a new collector on a retirement budget. J. Pike, 221 Pinafore Dr., Norman, OK 73072. (exp. Jan/Feb 99)

SEND 2-oz. SASE plus \$5.00 and receive an enveloped stuffed with collection remainders. Lots of stamps, cheap. John Andreachi, 456 Jackson Park Ave., Davenport, FL 33837. (exp. Jan/Feb 99)

CAYMAN wanted: Searching for Cayman postal history, covers (any era including current), unusual items or errors. John Seidl, 4324 Granby Way, Marietta, GA 30062, jseidl@dtus.com (exp. Jan/Feb 99)

BOY-GIRL/SCOUTS-GUIDES wanted: 5 large or 20 small (your choice) all different used foreign for each mint or used worldwide received. Ralph Cox (#428), 6027 Cheena, Houston, TX 77096-4079. (exp. Jan/Feb 99)

PENPAL EXCHANGE wanted: my *used* U.S. for your *used* Germany, France, Luxembourg, Scandinavia, Canada, Switzerland, Australia, N.Z., England. Write first: John Slace (#1218), 1730 Carlton St., Longwood, FL 32750. (exp. Jan/Feb 99)

Stamps, Memorabilia & Collectibles

BUY, SELL, TRADE & APPRAISE for beginners or advanced collectors: Princess Diana, Hollywood, Beatles, Churchill, Lincoln, James Dean, Disney, Elvis, Marilyn Monroe, Bruce Lee, Movies, Sherlock Holmes, Judaica, Space, Star Trek, Streisand, and all Thematics. U.S., Great Britain and Israel are a few of the countries we deal in. **Free price lists.** Outside the U.S. please send \$2, 3 IRCs or \$3 in complete mint topical sets of your country. Visa, MasterCard, Discover and American Express accepted. Bick International, P.O. Box 854, Dept. ISWSC, Van Nuys, CA 91408. ASDA, PTS, APS. Phone 818/997-6496. Fax: 818/988-4337. E-mail: ibick@aol.com and URL: <http://www.4free.com/bick>. (exp. Jan/Feb 99)

President Zollo's column, concluded from page two:

programs. Although I am looking for two individuals to take the leadership role in the Youth and Publications Programs, please contact me if you are willing to help in any way.

As I have stated before, this is your society. Its services and programs exist because we, the members, want them. If they are important to us and we want them to continue to exist, it will require action and assistance from many more of us.

One final issue...I have been asked by several regional secretaries to remind our non-US members that they may either renew their memberships through me or through their regional secretary (if there is one for your area). If you are paying dues in local currency, please arrange payment through your secretary. Also, for those members with a regional secretary, the annual 250 stamp donation for the youth program should be sent to the secretary (all others should send them to Dave Nelson).

Wishing you health, prosperity and many pleasurable hours of stamping. Until next time...

